



Action Plans: Final Results for Sport Fishing

To be implemented via Emergency Order authority:

	Chilkat/King Salmon: Option A with Modifications
District 15	District 15-A: no retention of king salmon 4/15 - 12/31
	District 15-B, C: no retention of king salmon 4/15 - 6/14
	Chilkat Inlet, north of Seduction Point: closed to king salmon fishing 4/15 – 6/30
District 12	District 12-B: no retention of king salmon 4/15 – 6/14
District 11	Districts 11-A, B, C: no retention of king salmon 4/15 – 6/14
	District 11-D: closed to king salmon fishing 4/15 – 6/30
THA near Juneau	6/15-8/31: 2 fish any size, no annual limit (conditioned on return in excess of broodstock)

	Unuk: Option B with Modifications
N. & NE Behm Canal	Closed year-round <u>Area:</u> Behm Canal and the contiguous bays enclosed to the north by a line from the western entrance of Bailey Bay to the northern tip of Hassler Island, and a line from Fin Point to Dress Point to a line from Cactus Point to Point Eva
W. Behm Canal	<u>4/1-8/14:</u> No retention <u>Area:</u> West Behm Canal and the contiguous bays enclosed to the north by a line from the western entrance of Bailey Bay to the northern tip of Hassler Island, and a line from Fin Point to Dress Point, and to the south by a line from Indian Point to Mike Point
SE Behm Canal & S. Revilla Channel	<u>4/1-8/14:</u> No retention <u>Area:</u> southern Revillagigedo Channel enclosed from a line from Lucky Point to Middy Point, continuing to the latitude of Beaver Point, and from Point Rosen to Quadra Point, and in southeast Behm Canal from Cactus Point to Eva Point
Herring Bay THA	<u>6/1-7/31:</u> Liberalized limits of 6 fish of any size with no annual limit
Ketchikan (other)	<u>4/1-8/14:</u> 1 fish $\geq 28''$ for all anglers, 3 fish non-resident annual limit
Neets Bay	1 fish $\geq 28''$ for all anglers, with a 3 fish non-resident annual limit

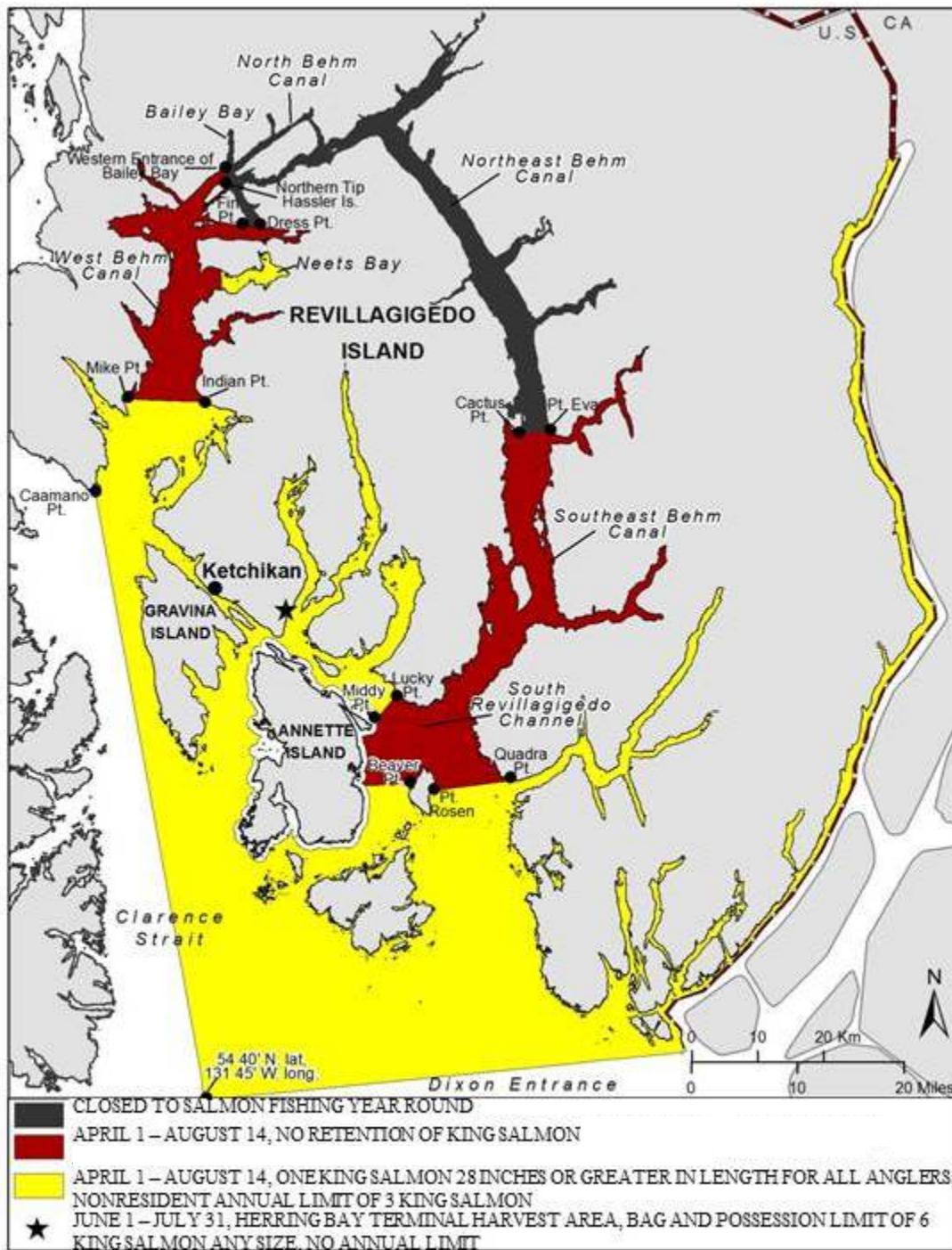


Figure 2. Map depicting sport fishery management measures to implement Unuk River king salmon action plan Option B with modification.

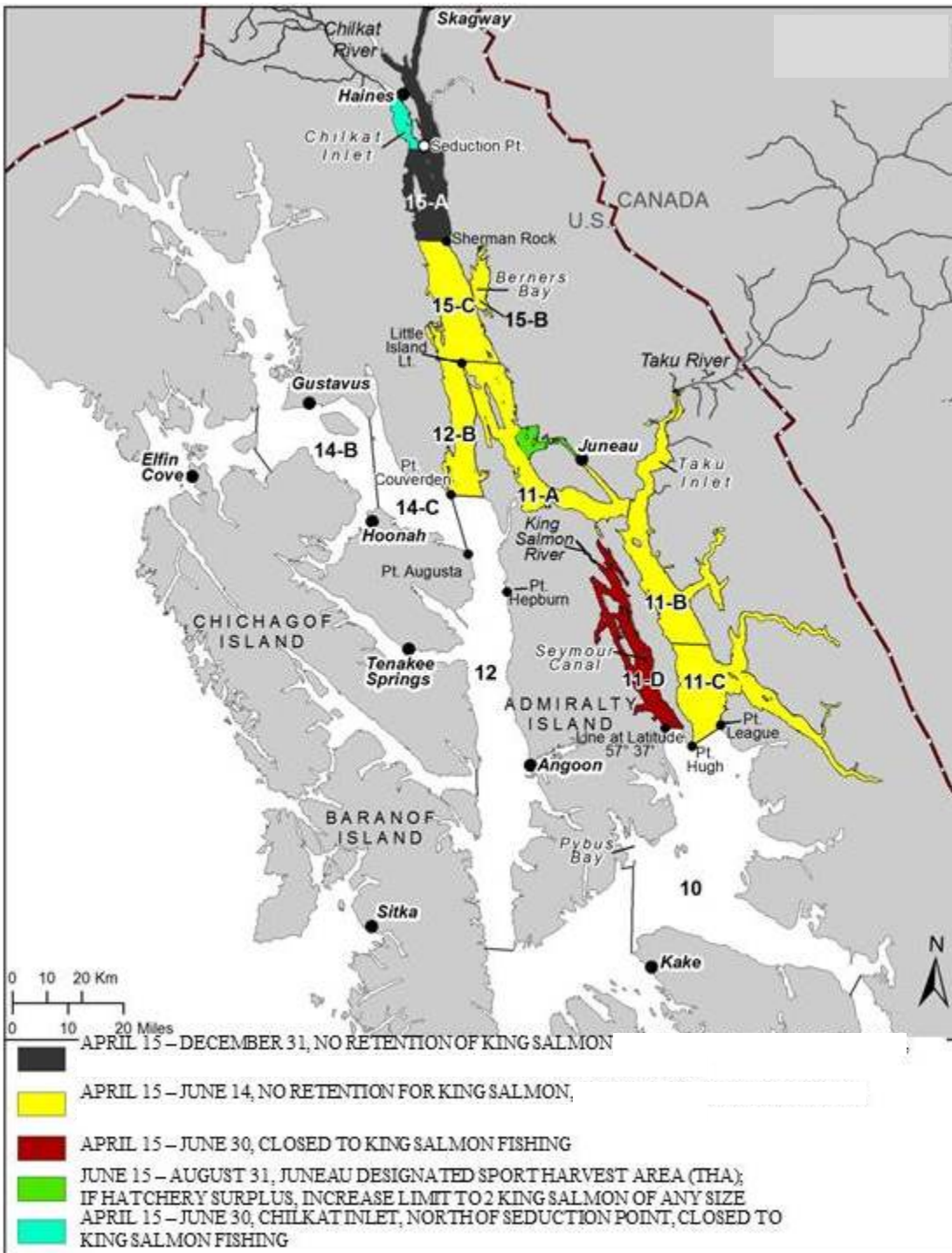


Figure 1. Map depicting sport fishery management measures to implement Chilkat and King salmon rivers king salmon action plan Option A with modification.